

ROAD INDEX

I cont.	ROCK CREEK RD. A6-F4
J	
BURROWS RD. B6-F6	SIDLEY RD. F1-F6
	STOCKING RD. D1-F1
	SHORT RD. F2-F3
K	
CLAY STREET B1-B6	THOMPSON RD. A3-F3
LEDGE RD. D1-D4	TRASK RD. A2-A3
LEROY RD. A3	
L	
D	
DEWEY RD. C1-C6	
M	
MADISON RD. D1-D6	
MOSELEY RD. A1-F2	
E	
F	
G	
H	
PHILIPS RD. F3	
PLANK RD. A5-B6	
I	
J	
K	
L	
M	
N	
O	
P	
Q	
R	
S	
T	
U	
V	
VALENTINE RD. A4-B4	
W	
X	
Y	
Z	

THOMPSON TOWNSHIP

SCALE: 1"=2000'

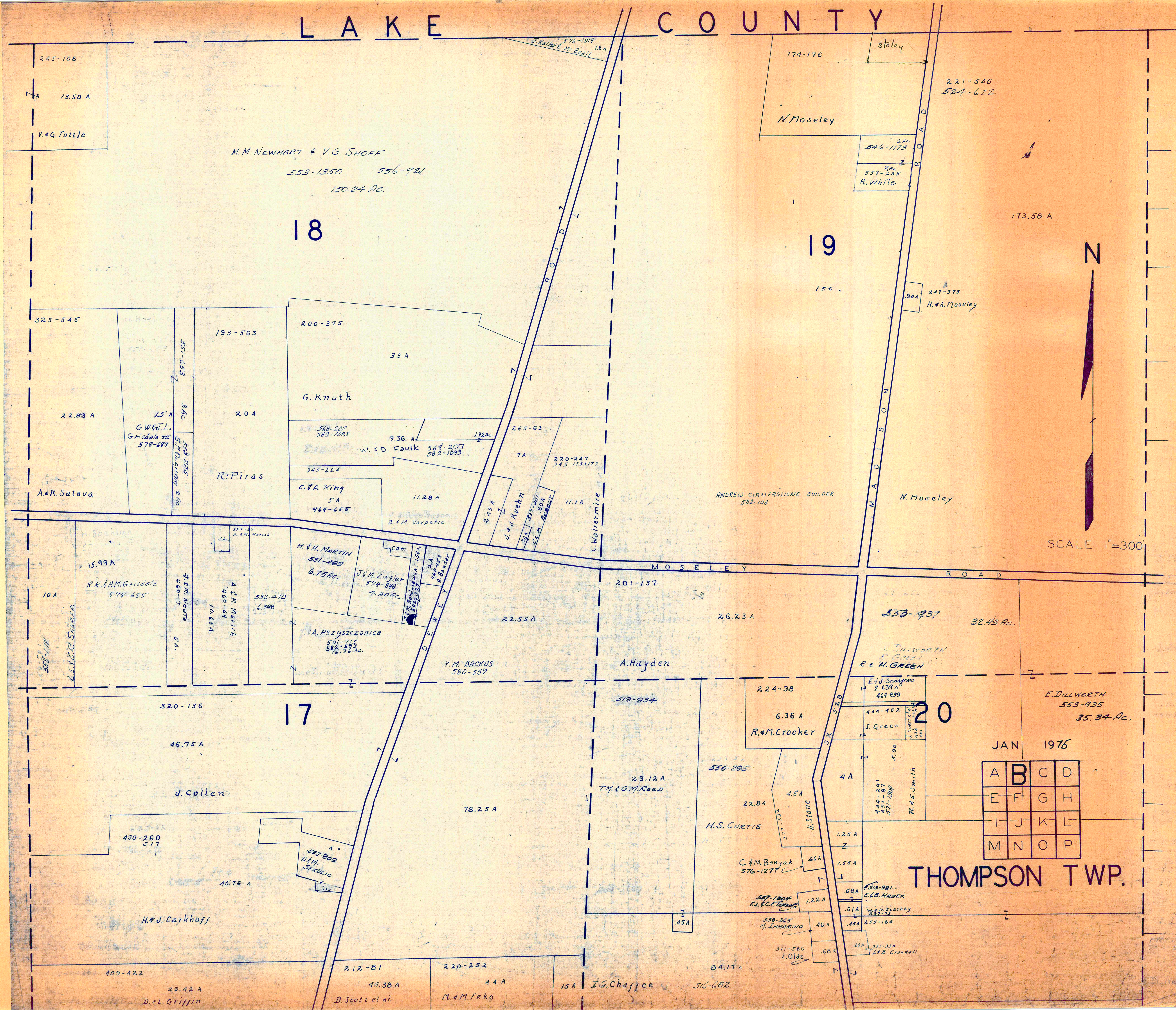
O. J. ROBINSON
GEORGIA COUNTY ENGINEER

UNPAVED ROADS
PAVED ROADS

TOWNSHIP LINE
COUNTY LINE

1 THOMPSON HIGH SCHOOL
2 THOMPSON ELEM. SCHOOL
3 THOMPSON METHODIST CHURCH
4 ST. PATRICKS CHURCH
5 ST. PATRICKS CHURCH
6 GRACE EVANGELICAL LUTHERAN CH.
7 CEMETERY
8 MAPLE GROVE CEMETERY
9 CEMETERY
10 THOMPSON VOL. FIRE DEPT.
11 THOMPSON TOWN HALL

LAKE COUNTY



SCALE 1"=300'

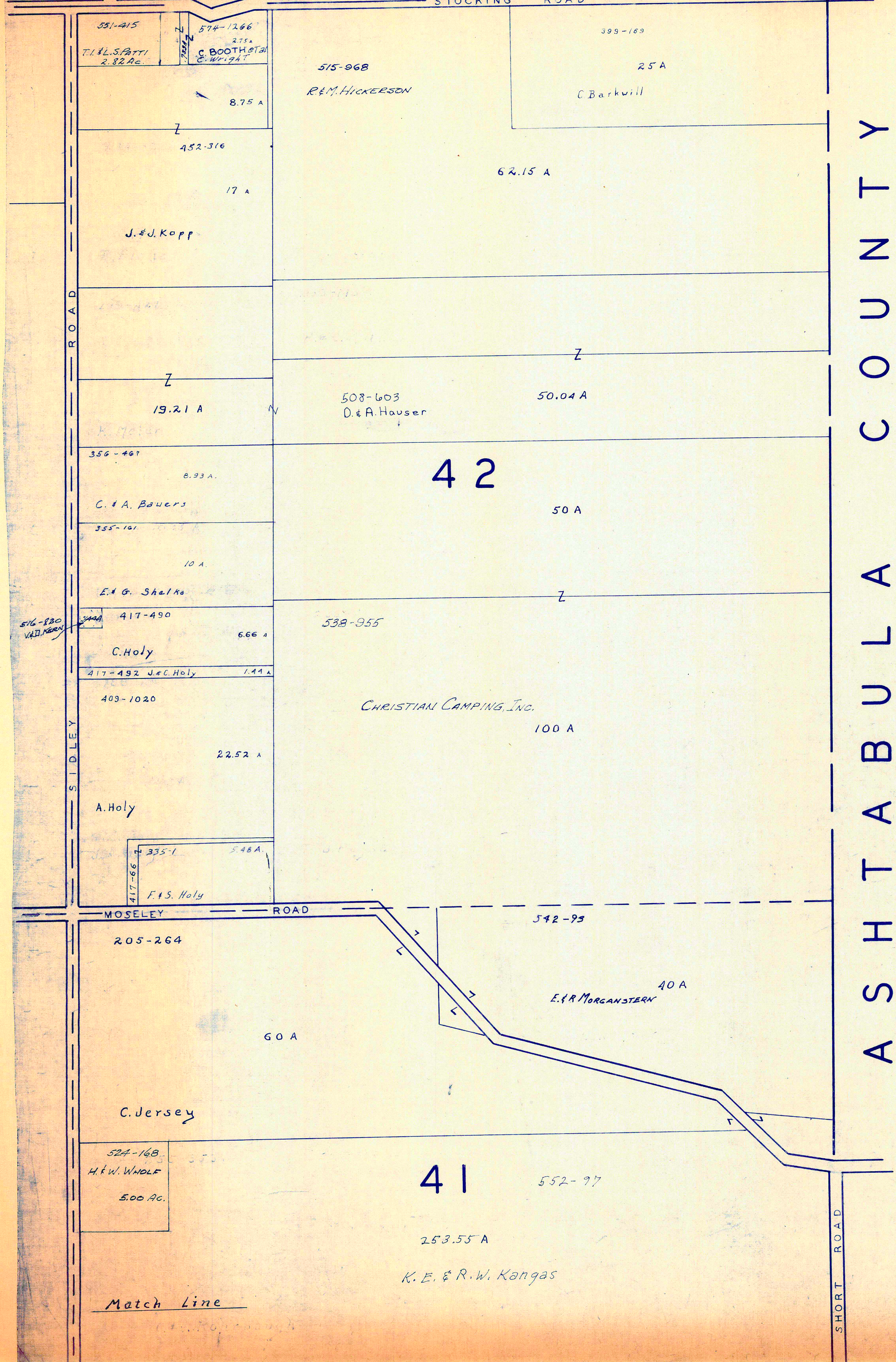
JAN 1976

A	B	C	D
E	F	G	H
I	J	K	L
M	N	O	P

THOMPSON TWP.

L A K E C O U N T Y

STOCKING ROAD



A S H T A B U L A C O U N T Y



SCALE 1" = 300'

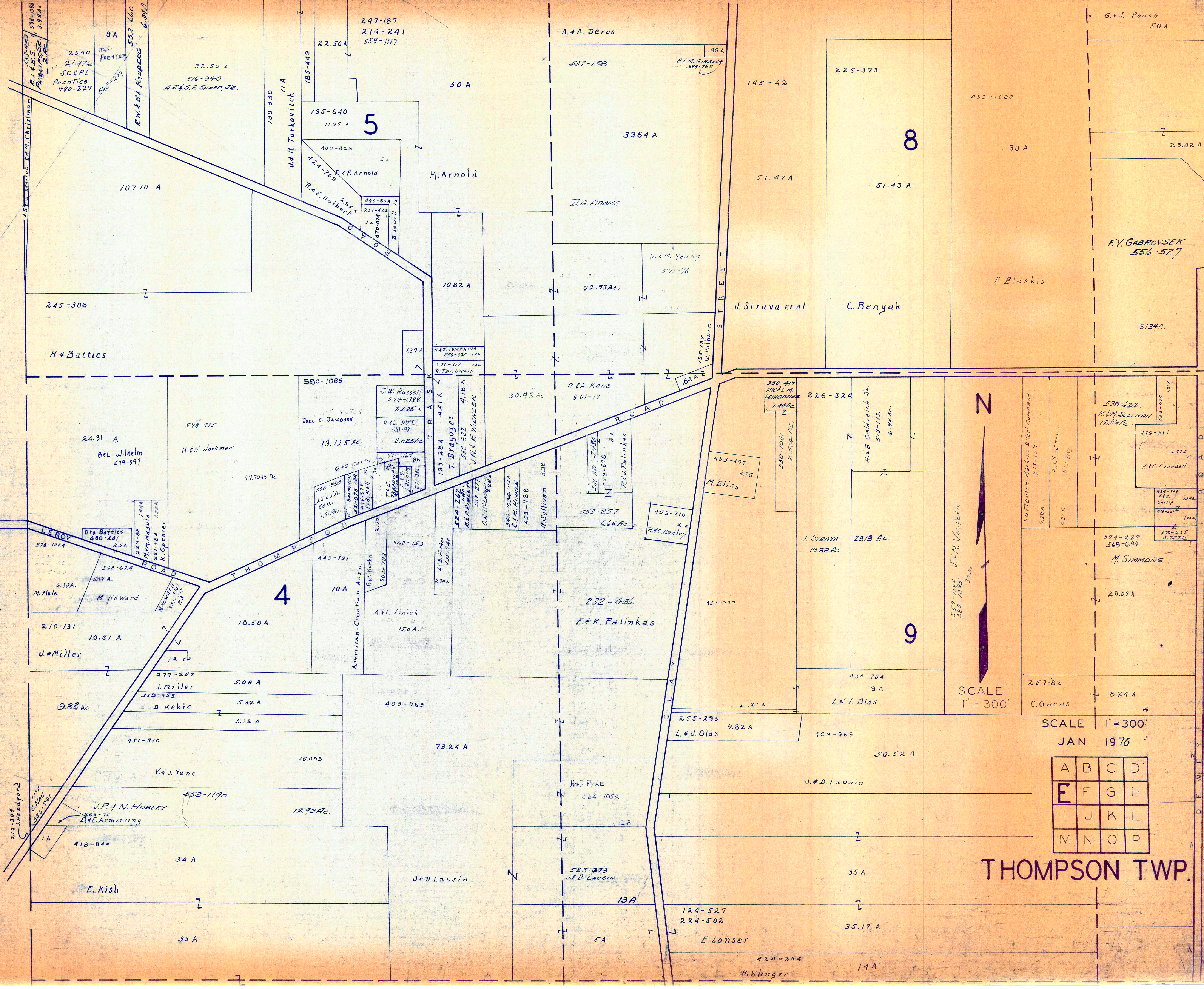
JAN 1973

A	B	C	D
E	F	G	H
I	J	K	L
M	N	O	P

THOMPSON TWP.
Match Line

Match Line

L A K E C O U N T Y

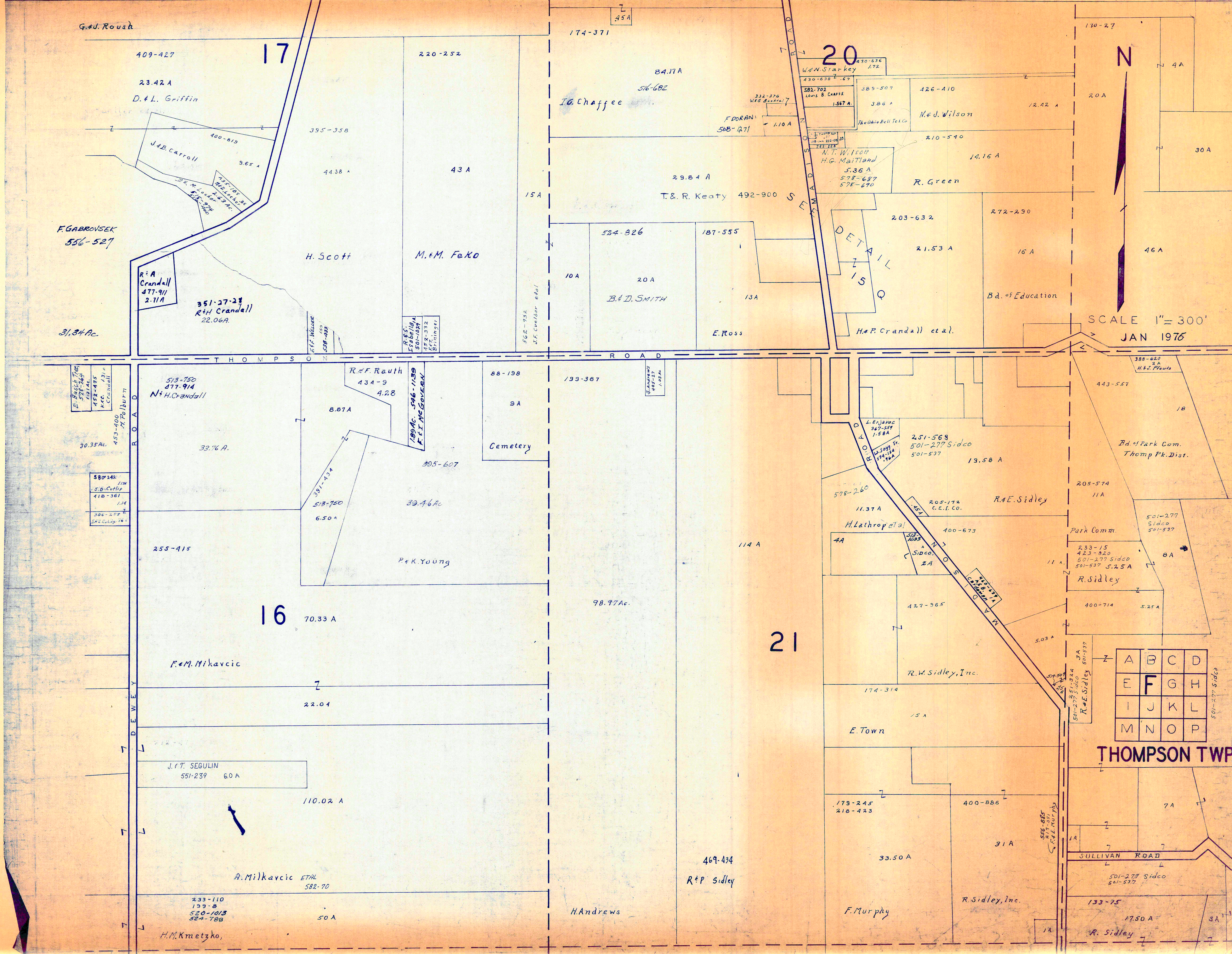


N
SCALE 1" = 300'

SCALE 1" = 300'
JAN 1975

A	B	C	D
E	F	G	H
I	J	K	L
M	N	O	P

THOMPSON TWP.



G. J. Roush

409-427

17

23.42 A

D. & L. Griffin

220-252

174-371

45 A

84.17 A

516-682

J. G. Chaffee

20

W. N. Starkey

430-636

430-638 E. 67

582-702

Leona B. Crane

1.567 A

F. DORAN

508-1271

1.10 A

332-370

W. G. Buehler

1.10 A

389-507

3.86 A

The Ohio Bell Tel. Co.

426-410

12.42 A

N. & J. Wilson

210-540

14.16 A

N. T. Wilson

H. G. Maitland

5.36 A

578-687

578-690

R. Green

203-632

2.153 A

272-290

16 A

Bd. of Education

H. & P. Crandall et al.

130-27

20 A

30 A

46 A

F. GABROUSEK

556-527

R. A. Crandall

477-911

2.71 A

351-27-28

R. H. Crandall

22.06 A

31.34 Ac.

H. Scott

M. & M. Feko

29.84 A

T. & R. Keaty

492-900

10 A

20 A

B. & D. SMITH

13 A

E. Ross

DETAILS

SCALE 1" = 300'
JAN 1976

E. Pasch
1011A
452-425
Kec. 1/31/77
Crandall

30.35 Ac.

580-242
12M
S. G. Cuthie
418-361
1.14
300-259
542 C. Imp. 16

513-750
477-914
N. H. Crandall

33.76 A.

255-415

F. & M. Mikavcic

70.33 A

22.04

J. & T. SEGULIN

551-239

60 A

110.02 A

A. Milkavcic ETAL

582-70

50 A

H. M. Kmetzko,

R. & F. Rauth

434-9

4.28

8.87 A

395-607

33.46 Ac.

P. & K. Young

6.50 A

513-750

301-412

189 Ac. 546-1199

F. I. McGOVERN

88-198

9 A

Cemetery

193-387

98.97 Ac.

114 A

H. Lathrop et al.

427-965

400-673

R. & E. Sidley

205-172

C. E. I. CO.

11.37 A

578-260

251-569

501-277 Sidco

501-537

13.58 A

Bd. of Park Com. Thompson Dist.

88-198

9 A

Cemetery

193-387

98.97 Ac.

114 A

H. Lathrop et al.

427-965

400-673

R. & E. Sidley

205-172

C. E. I. CO.

11.37 A

578-260

251-569

501-277 Sidco

501-537

13.58 A

Bd. of Park Com. Thompson Dist.

21

469-434

R. & P. Sidley

H. Andrews

33.50 A

F. Murphy

31 A

R. Sidley, Inc.

173-245

218-423

400-886

31 A

R. Sidley, Inc.

173-245

501-277 Sidco

501-537

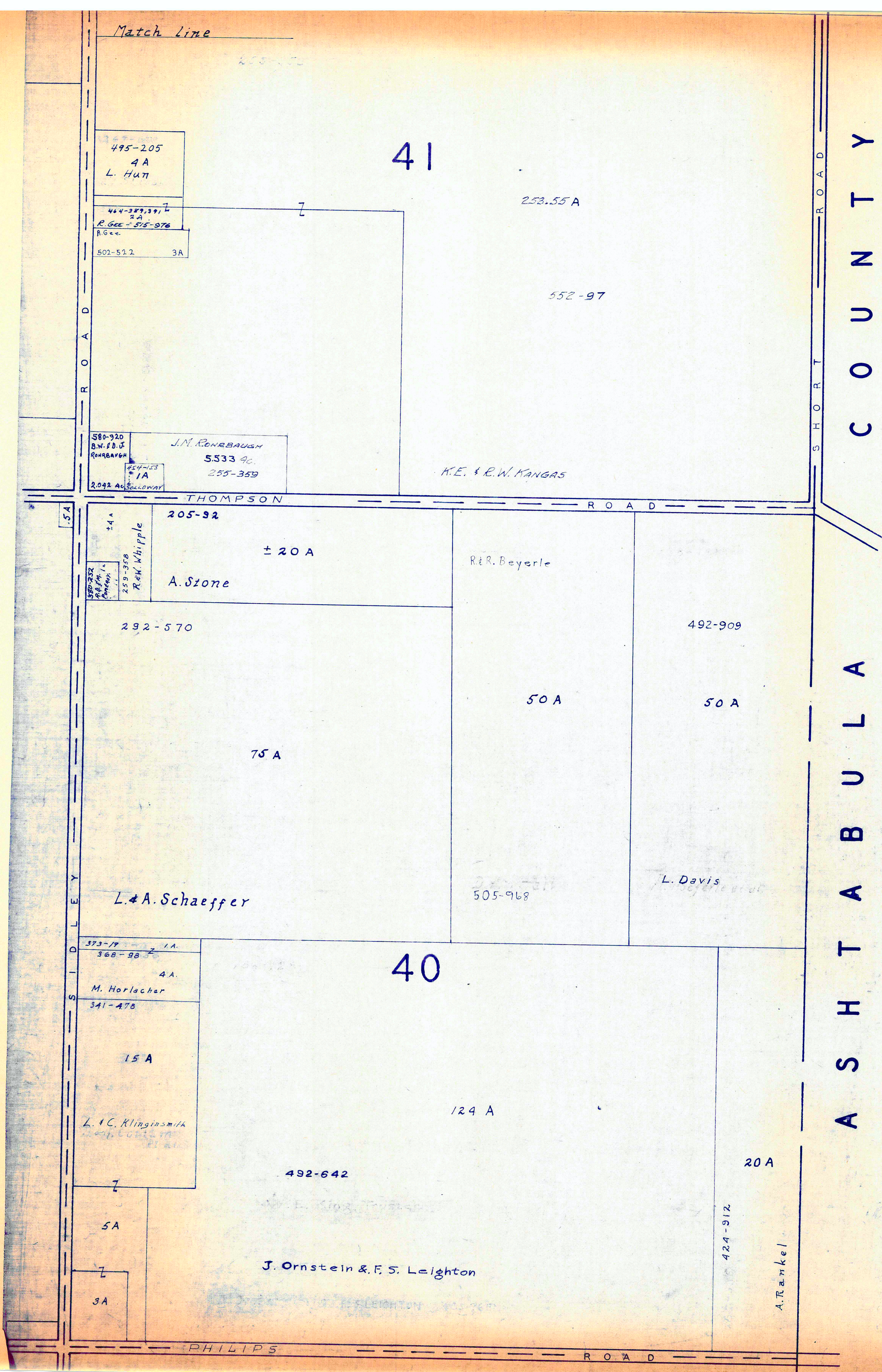
133-75

17.50 A

R. Sidley

A	B	C	D
E	F	G	H
I	J	K	L
M	N	O	P

THOMPSON TWP.



Match Line



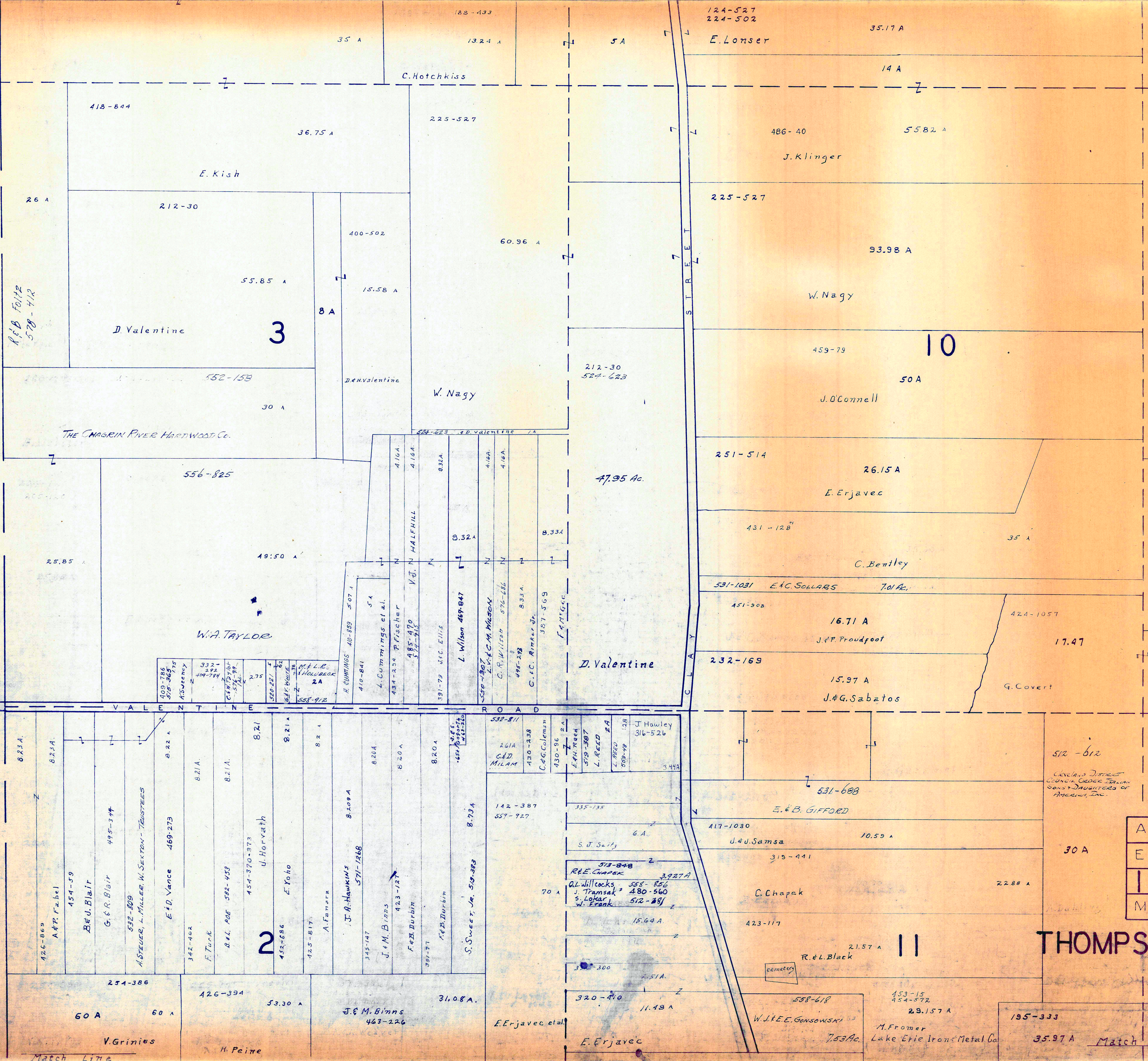
SCALE 1" = 300'
JAN 1976

A	B	C	D
E	F	G	H
I	J	K	L
M	N	O	P

THOMPSON TWP.

L A K E
C O U N T Y

L A K E



Ref. Folio 578-412

3

D. Valentine

3

8 A

W. Nagy

10

J. O'Connell

50 A

26.15 A

E. Erjavec

C. Bentley

16.71 A

J.P. Proudfoot

15.97 A

J.G. Sabatos

G. Covert

512-612

Cleveland District
Circuit Court
Case No. 10000
Sons & Daughters of
America, Inc.

SCALE 1" = 300'

A	B	C	D
E	F	G	H
I	J	K	L
M	N	O	P

THOMPSON TWP.

JAN 1976

195-333

35.97 A

Match Line



Match Line

H. Peine

J. & M. Binns
463-226

31.08 A.

E. Erjavec et al

E. Erjavec

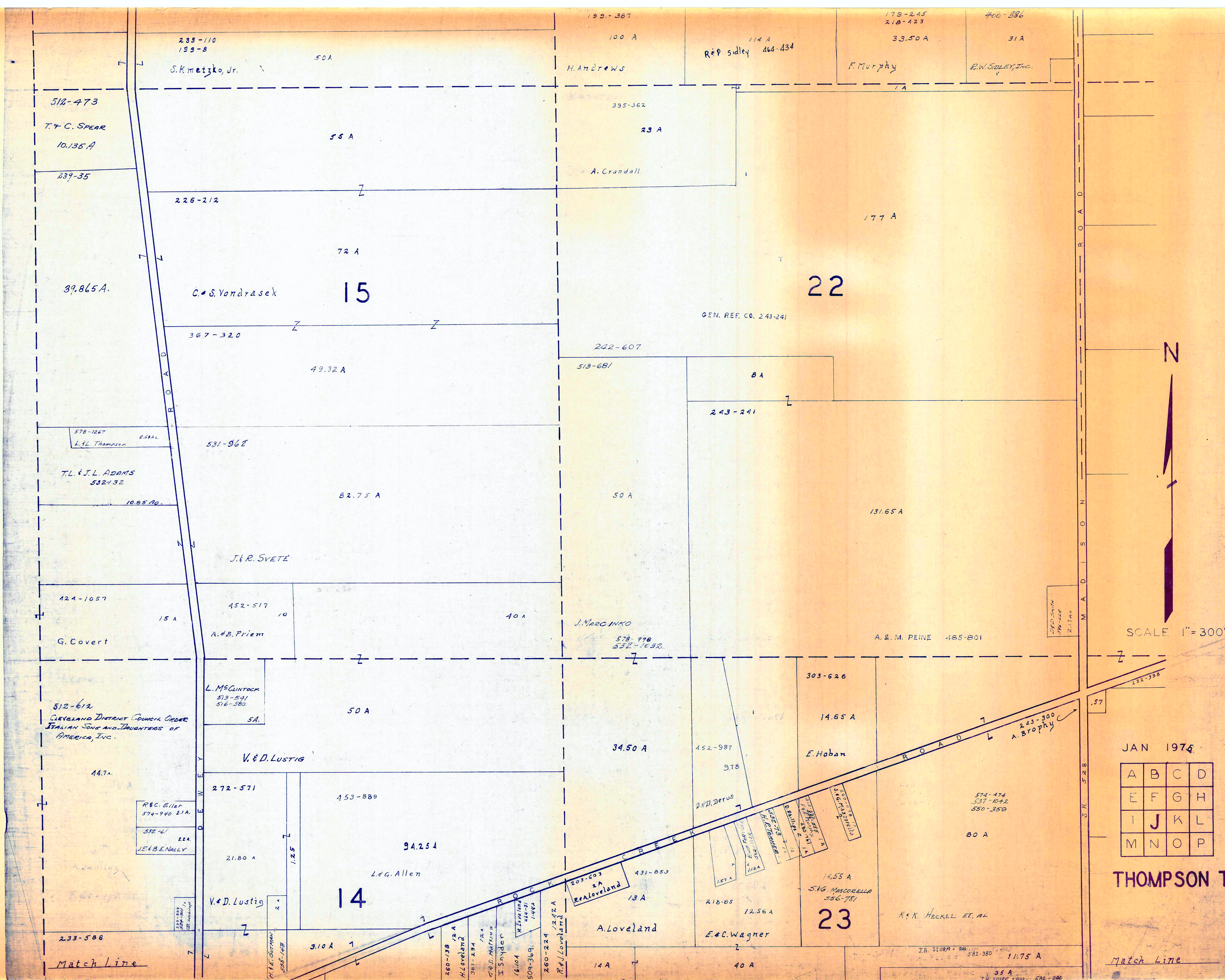
W. J. E. Gonsowski
7.53 Ac.

M. Fromer
Lake Erie Iron & Metal Co.

195-333

35.97 A

Match Line



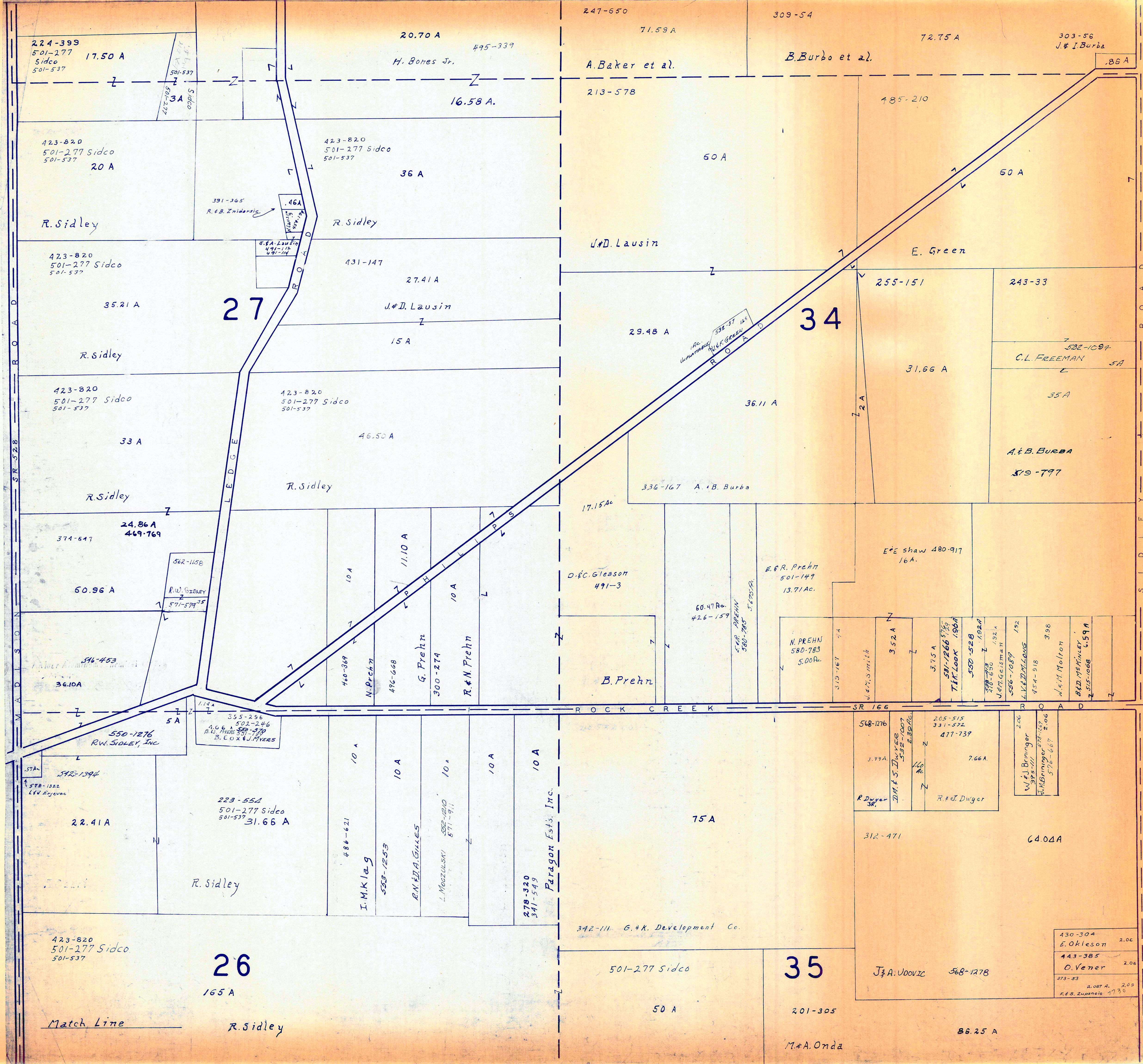
SCALE 1" = 300'

JAN 1976

A	B	C	D
E	F	G	H
I	J	K	L
M	N	O	P

THOMPSON TWP

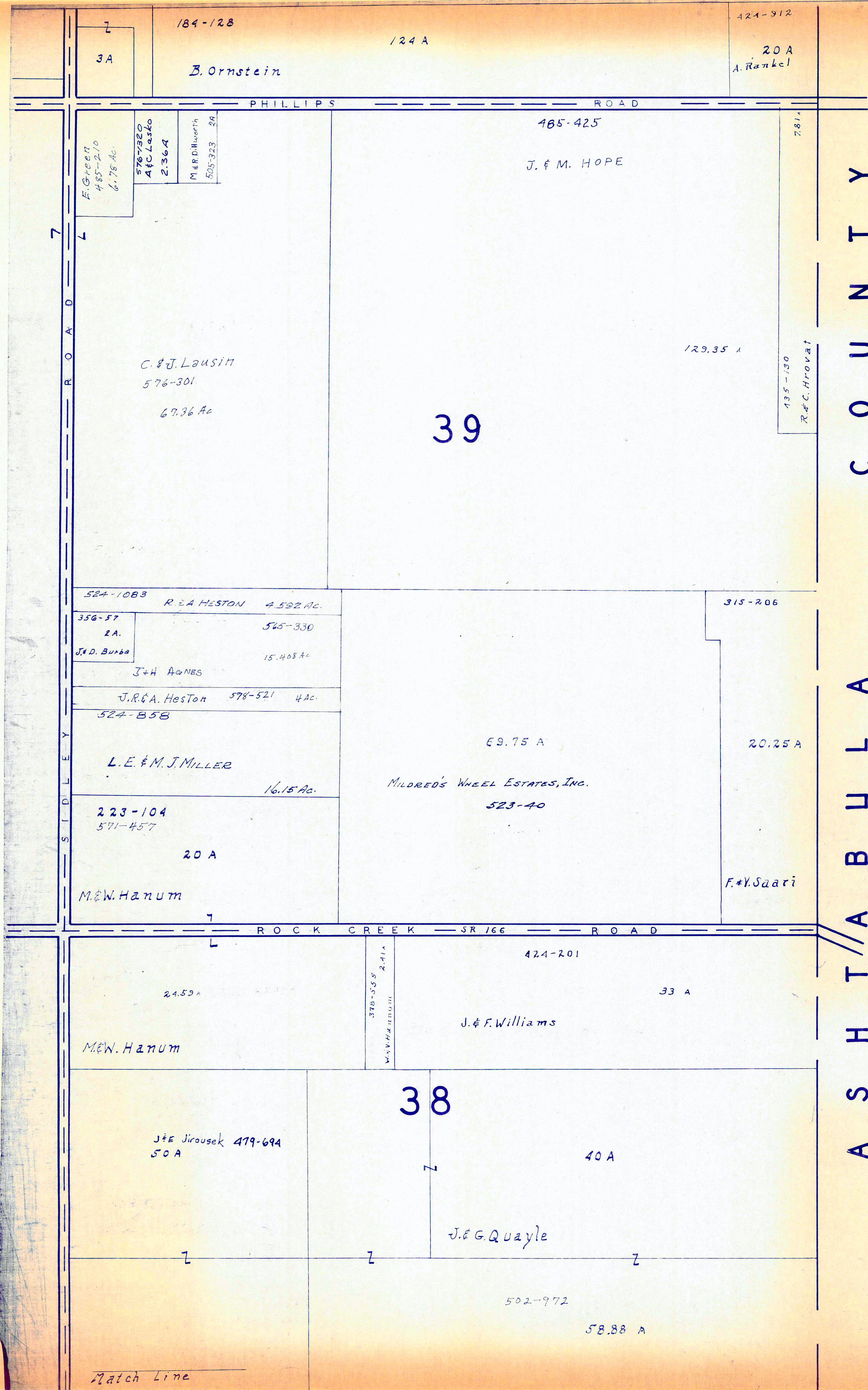
Match Line



JAN 1976

A	B	C	D
E	F	G	H
I	J	K	L
M	N	O	P

THOMPSON TWP



ASH T A B U L L A C O U N T Y

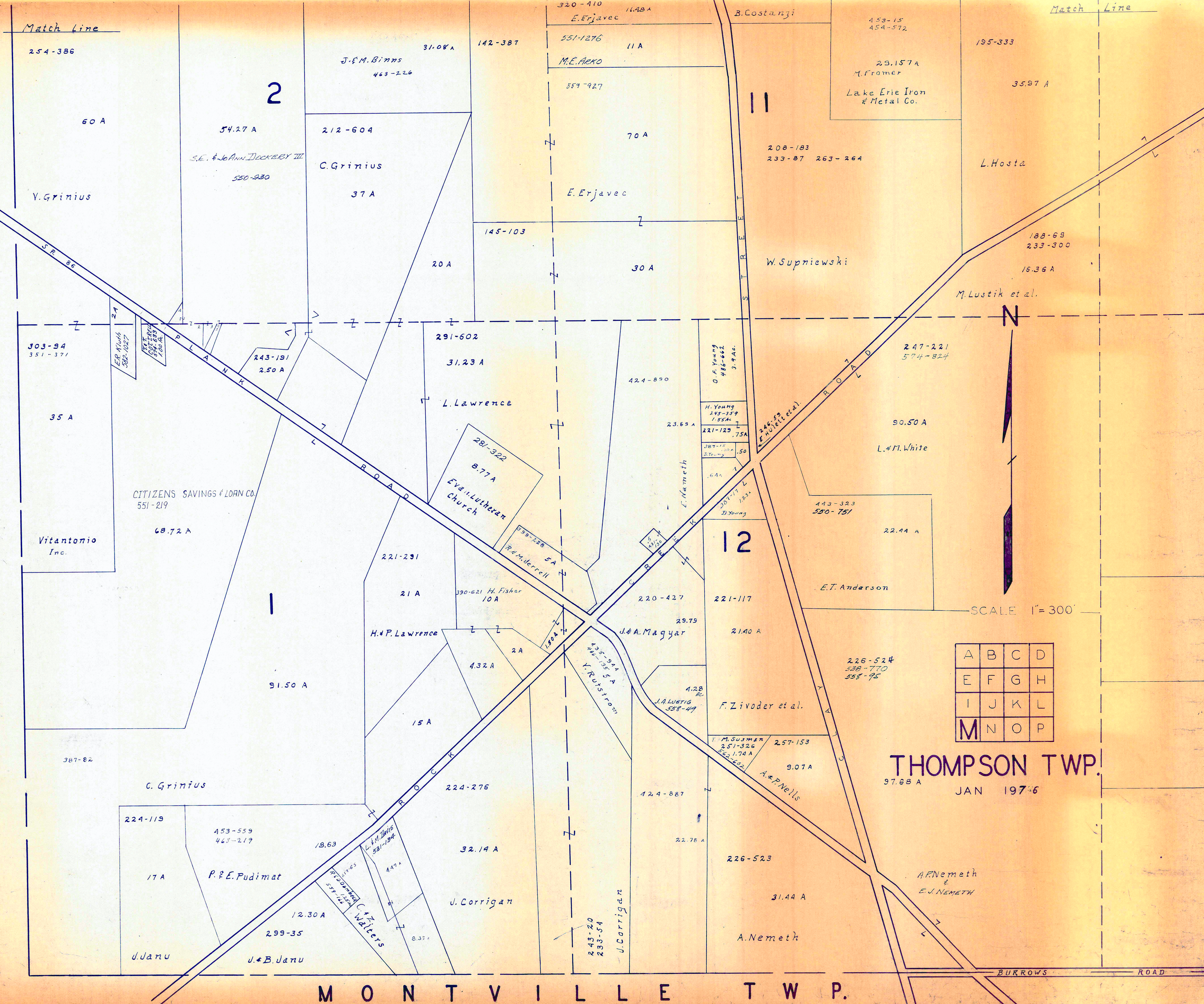


SCALE 1" = 300'
JAN 1974

A	B	C	D
E	F	G	H
I	J	K	L
M	N	O	P

THOMPSON TWP.
Match Line

L A K E C O U N T Y



Match Line

Match Line

2

11

12

N

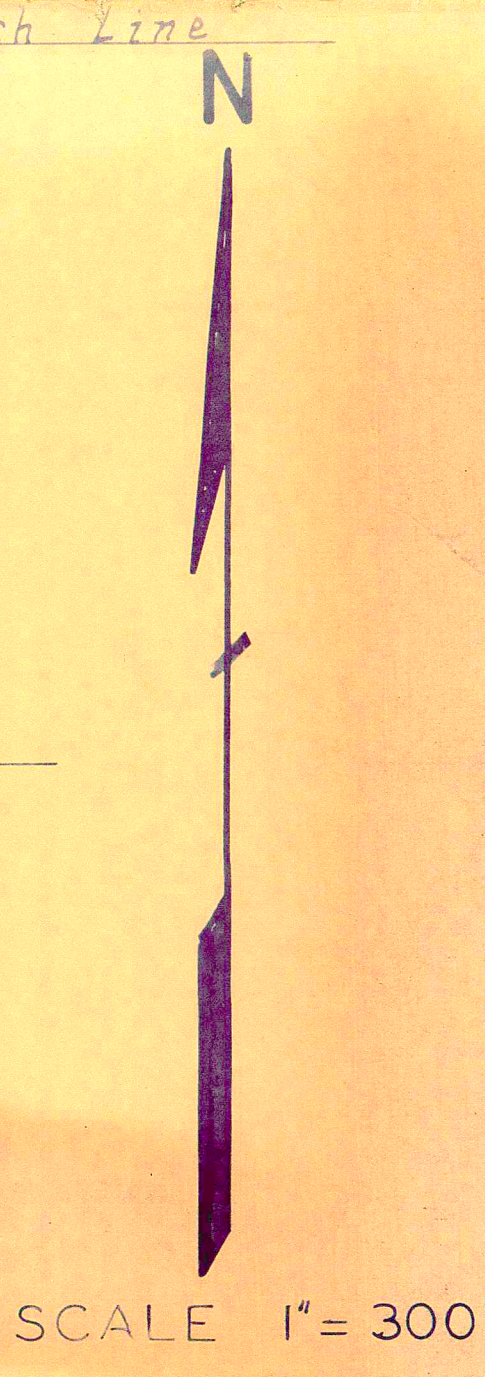
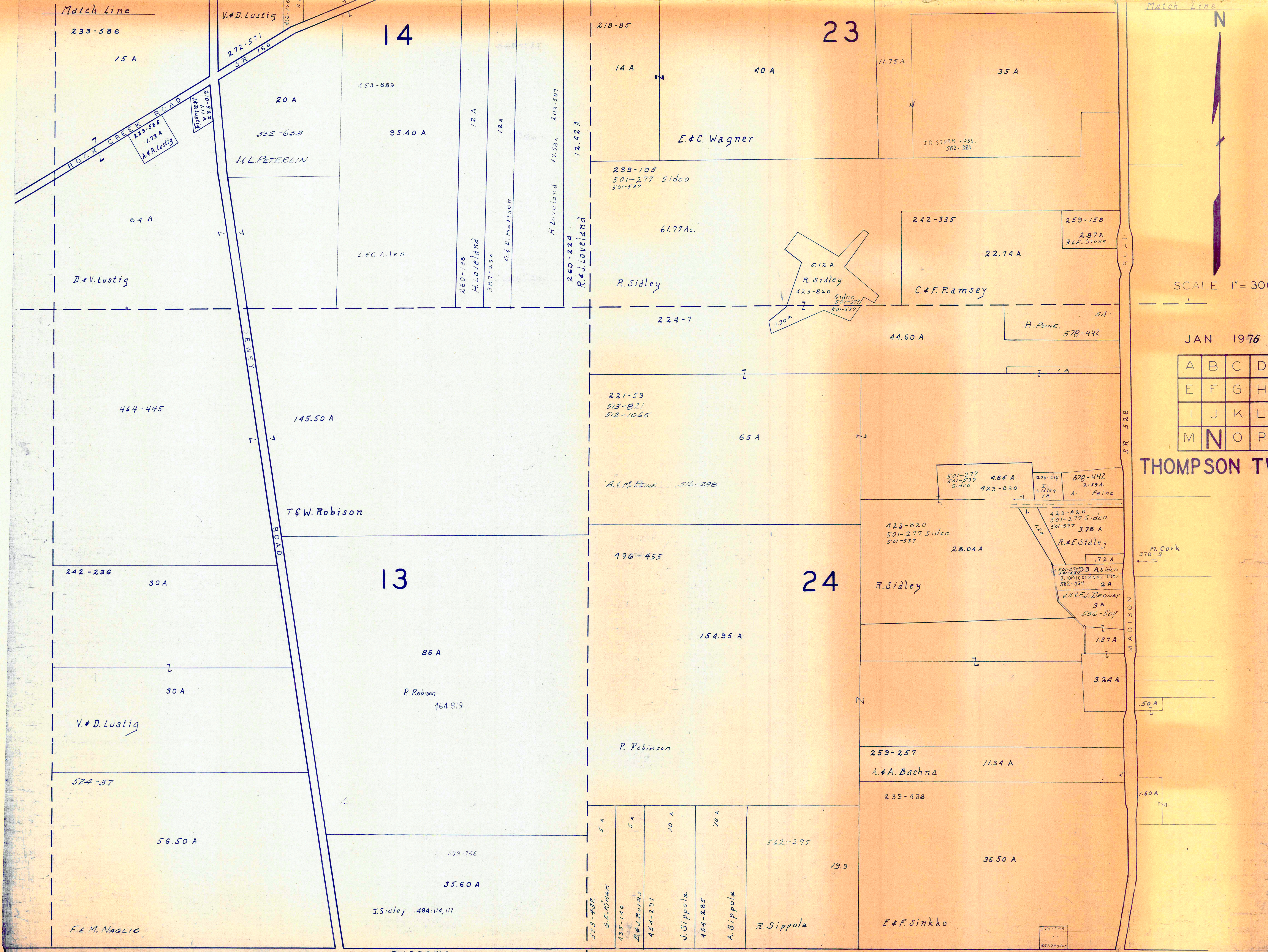
SCALE 1"=300'

A	B	C	D
E	F	G	H
I	J	K	L
M	N	O	P

THOMPSON TWP.

JAN 1974

M O N T V I L L E T W P.



JAN 1976

A	B	C	D
E	F	G	H
I	J	K	L
M	N	O	P

THOMPSON TWP.

BURROWS ROAD
MONTVILLE TWP.

Match Line

Match Line

423-820
501-277 Sidco
501-537

26

165 A

R. Sidley

205-275

50 A

L. Ramsey et al.

218-611

54 A

M. J. Guditas

224-6
234-169

26.30 A

E. Barnum et al.

251-95

25.50 A

326-37 235 A
B. Turner
374-67 2 A
B. B. Turner
50 A

424-583

47.06 A

B. B. Turner

69 A
425-344
B. B. Turner

38.46 A B. B. Turner 480-4

312-126
13 A
J. S. Turner

312-231
17.5 A

52-466
J. L. Geesey

W. Gurich et al.

501-277 Sidco
501-537

50 A

196-77

M. Sidley

242-77

T. M. O'Kicki

254-437

131.67 A

W. Anderson

M. B. DiVincenzo
550-1241
20.00 Ac.

239-440
5 A
G. Kimak

35

36.25 A

M. O'Kee ET AL.

520-833
532-356

49.83 A

49.83

546-442
S. Seymour

344-1283, 1285
R. C. McLane 2.92 A
285 A

8.63 A

454-142

16.35 A

Kennemetal Rod & Gun Club

300-149

A. N. Demukaitis

9.62 A

556-637

G. E. & J. L. Goehring

9.62 A

291-281 292-116 L. Goudy et al. 5.78 A

20 A

427-814

36

356-316
5 A

35 A

F. J. Yelcho

106.50 A

14 A

W. M. Bower

14.50 A

551-183
15
EISENHART
1460 A
103 A
C. M.

E. Hoban
281-221

38

37

N



SCALE 1" = 300'
JAN 1976

A	B	C	D
E	F	G	H
I	J	K	L
M	N	O	P

THOMPSON TWP.

M O N T V I L L E

T O W N S H I P

WADSWORTH ROAD

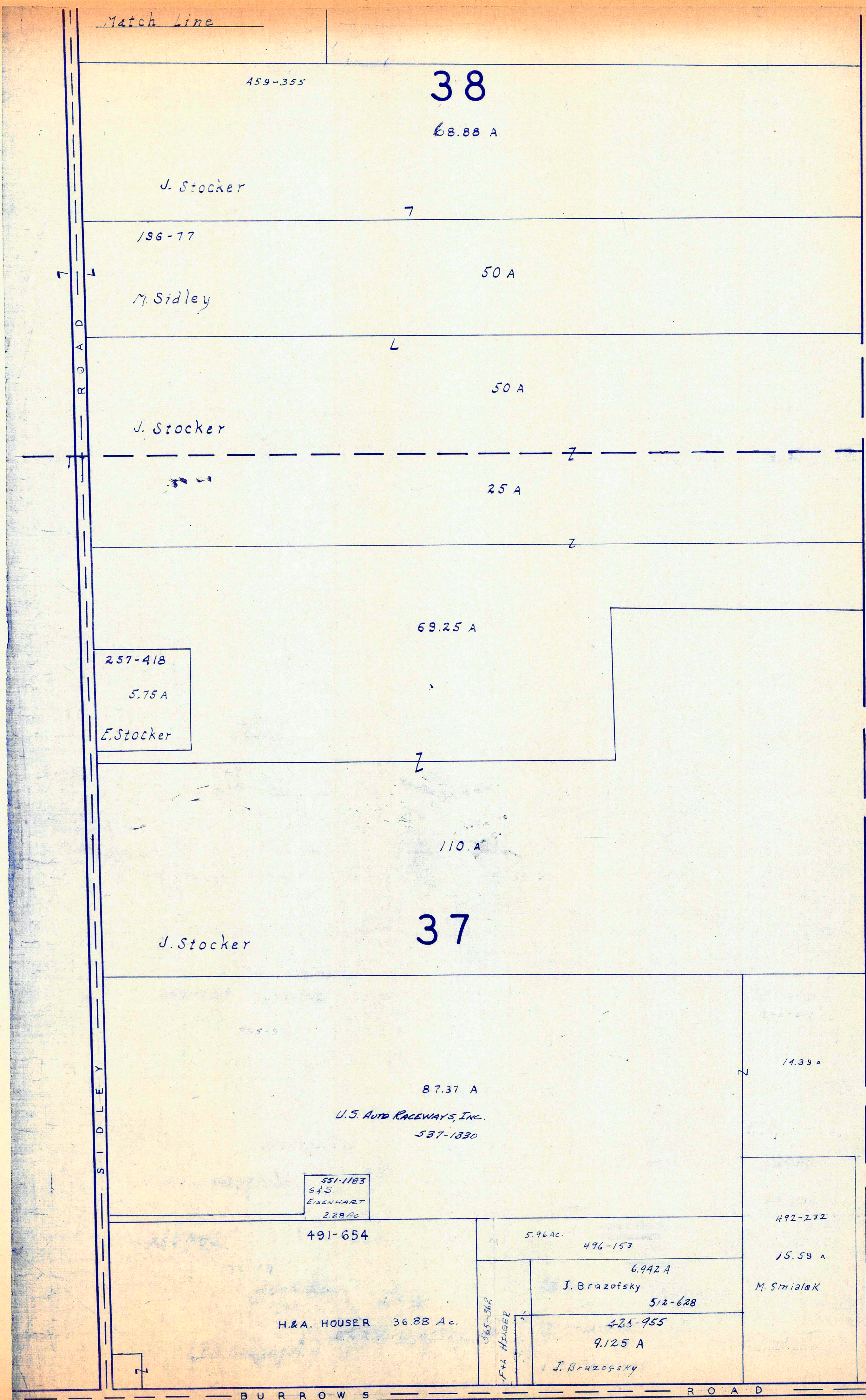
SIDLEY ROAD

BURROWS

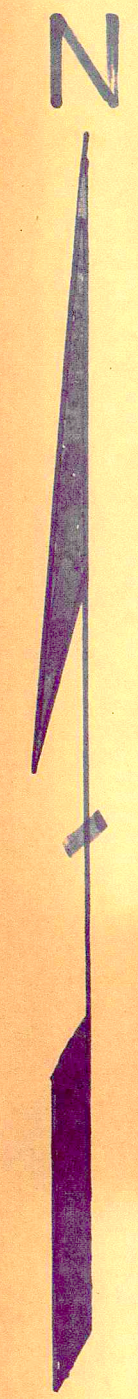
ROAD

Match Line

Match Line



A S H T A B U L A C O U N T Y



JAN 1976

SCALE 1" = 300'

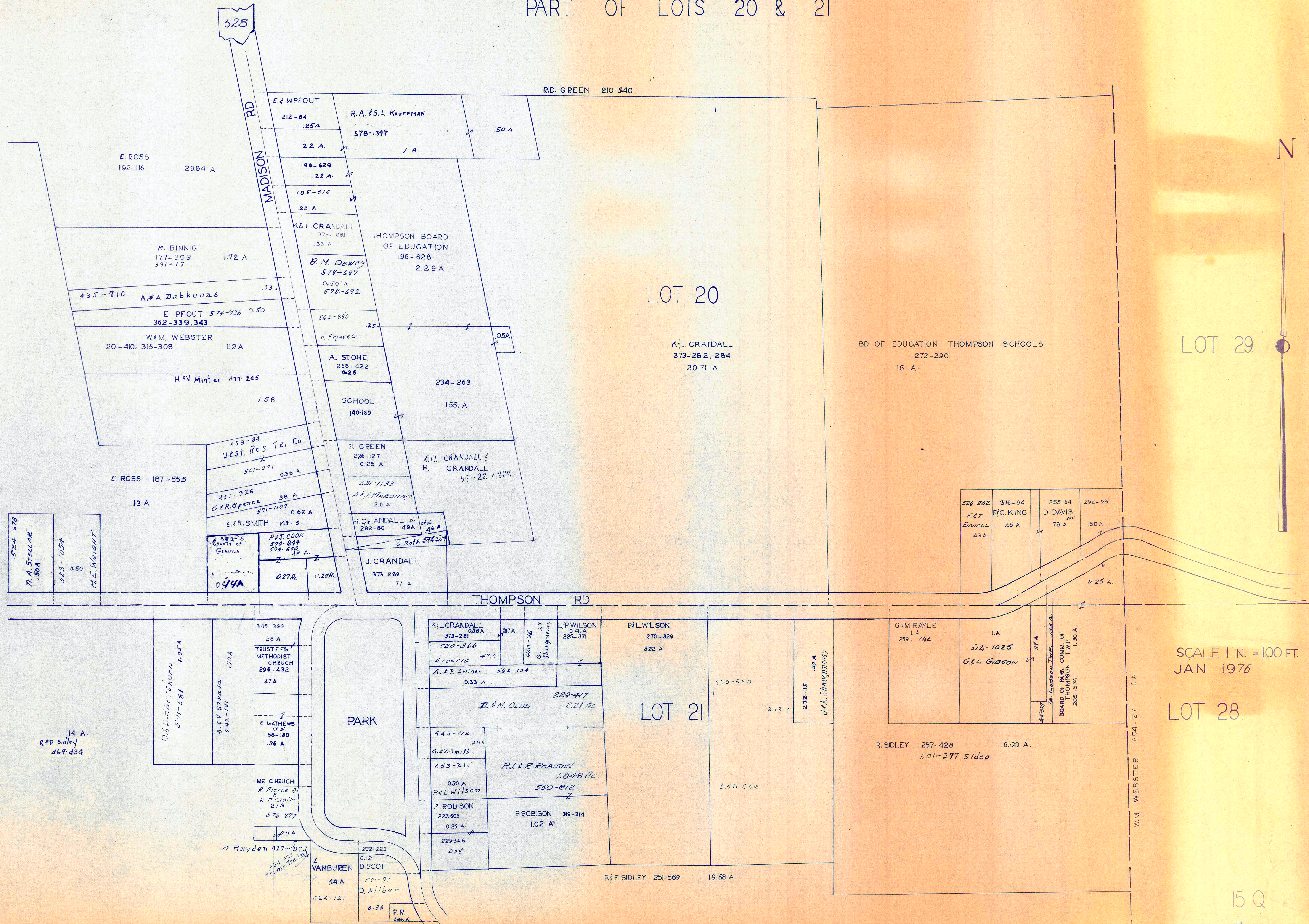
A	B	C	D
E	F	G	H
I	J	K	L
M	N	O	P

MONTVILLE TWP.

THOMPSON TWP.

THOMPSON TP.

PART OF LOTS 20 & 21



SCALE 1 IN. = 100 FT.
JAN 1976

15 Q